

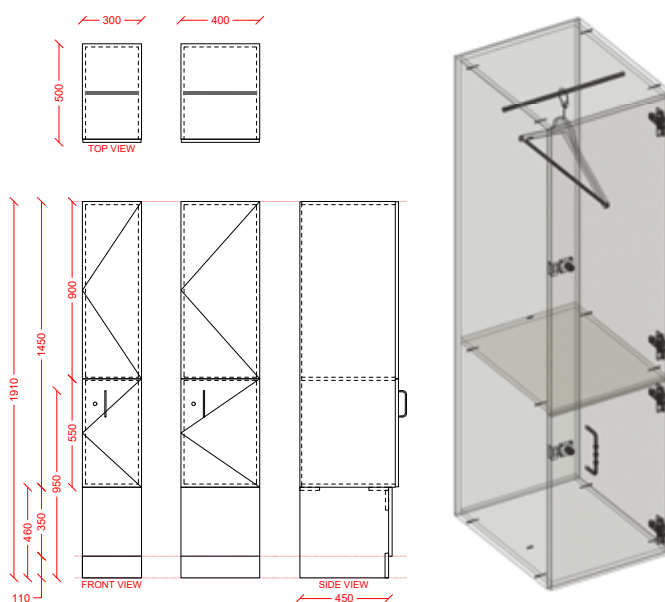


## INTERLOC LOCKER TYPE

# INTERLOC DDA – LOCKER 2 DOOR

### INTERLOC ACCESSIBLE LOCKER. HANGING LOCKER AND SMALL DOOR. CONVENTIONAL STYLE WITH HANGING SPACE.

- ▶ Locker 1.450 mm high x 500mm deep  
(Bottom Door .550 mm high -Top door .900mm high with coat hanger supplied) .400mm wide Standard
- ▶ Finished height 1.900m
- ▶ Custom dimensions available upon request
- ▶ Interloc Plinth .450 mm high (black as standard)
- ▶ Matching Colour plinth available upon request
- ▶ Nominate Interloc Locking - request Interloc options
- ▶ End Panels / Filler Panels to suit
- ▶ Interloc Numbering coloured labels or option for printed labels at extra cost
- ▶ Vents optional (vertical or horizontal)
- ▶ Coloured Internals optional



**REVIT Portal**  
[portal.interloc.com.au](http://portal.interloc.com.au)

**Locker Builder**  
(separate to Revit)