

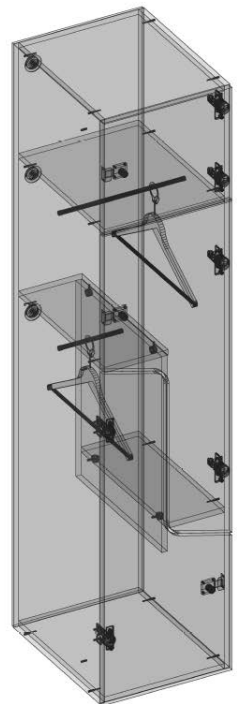
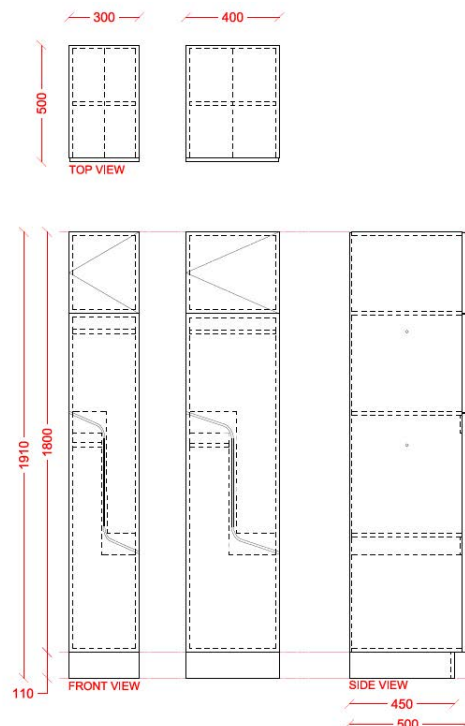


INTERLOC LOCKER TYPE

INTERLOC GT

2 DOOR HANGING INTERLOCKING TYPE. 1 SMALL BAG OR SHOE LOCKER ABOVE.

- ▶ 1800mm high x 500mm deep (standard)
- ▶ 300mm wide or 400mm w (standard)
- ▶ Hanging distance 950 mm
- ▶ Coat hangers provided
- ▶ Custom dimensions available upon request
- ▶ Interloc Plinth 110mm high black (standard)
- ▶ Or Custom height plinth (Interloc recommend no lower than 80mm) custom colours also available
- ▶ Nominate Interloc Locking - request Interloc options
- ▶ Bulkheads available
- ▶ End Panels / Filler Panels to suit
- ▶ Interloc Numbering coloured labels or option for printed labels at extra cost
- ▶ Vents optional (vertical or horizontal)
- ▶ Sloping Tops optional
- ▶ Coloured Internals optional



REVIT Portal
portal.interloc.com.au

Locker Builder
(separate to Revit)