

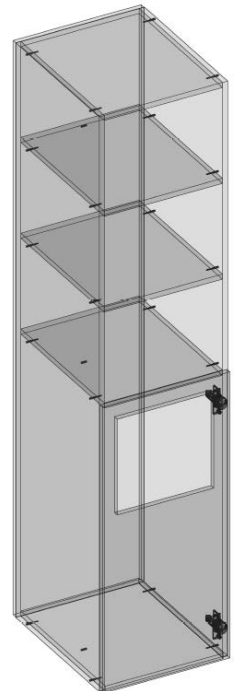
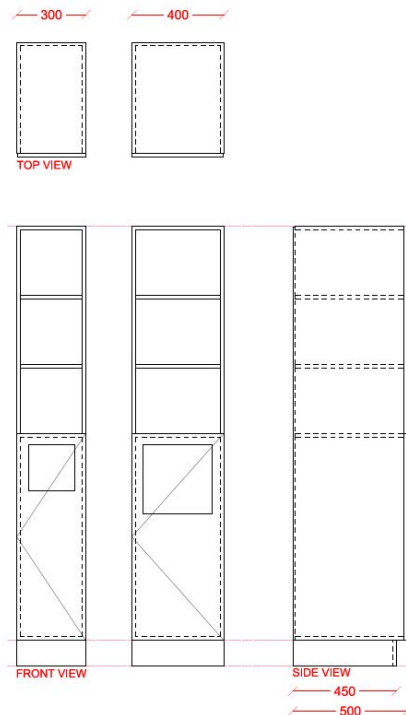


INTERLOC LOCKER TYPE

INTERLOC TOWEL BIN - SQUARE HOLE

TOWEL BIN AND SHELVING UNIT. SQUARE HOLE DESIGN. TOWEL STORAGE.

- ▶ Towel Unit- Square Hole
- ▶ 1800mm high x 600mm deep (standard)
- ▶ 400mm wide standard
- ▶ Custom dimensions available upon request
- ▶ Interloc Plinth 110mm high Black (standard)
- ▶ Coloured plinth available upon request
- ▶ Or Custom height (Interloc recommend no lower than 80mm)
- ▶ Bulkheads available
- ▶ End Panels / Filler Panels to suit
- ▶ Sloping Tops Optional



REVIT Portal
portal.interloc.com.au

Locker Builder
(separate to Revit)