

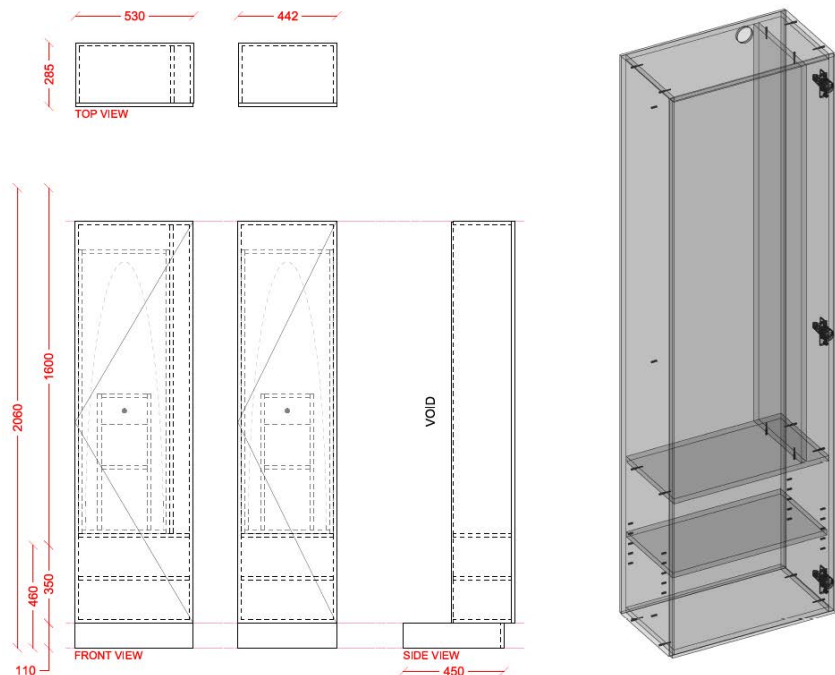


## INTERLOC LOCKER TYPE

# INTERLOC FULL HEIGHT IRONING BOARD UNIT

### SINGLE DOOR.

- ▶ Full Height Ironing Unit 1800mm high x .442mm wide  
1 x rectangular door
- ▶ Interloc Plinth 110mm high black (standard)
- ▶ Or Custom height plinth (Interloc recommend no lower than 80mm) custom colours also available
- ▶ Cavity behind to allow for lead to plugged into GPO
- ▶ Interloc advise GPO to be provided by others at a height of 1800mm off the FFL to allow access to GPO once unit is installed.
- ▶ Ironing board 950mm extended.
- ▶ Robin Hood ironing station includes board and cover
- ▶ Iron supplied
- ▶ Hardwired
- ▶ Timer
- ▶ White carcass
- ▶ Timber laminate
- ▶ Bulkheads available
- ▶ End Panels / Filler Panels to suit
- ▶ Interloc Numbering coloured labels or option for printed labels at extra cost Sloping Tops (optional)
- ▶ Coloured Internals (optional)



**REVIT Portal**  
[portal.interloc.com.au](http://portal.interloc.com.au)

**Locker Builder**  
(separate to Revit)