

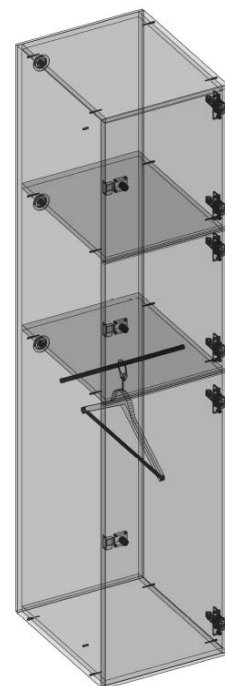
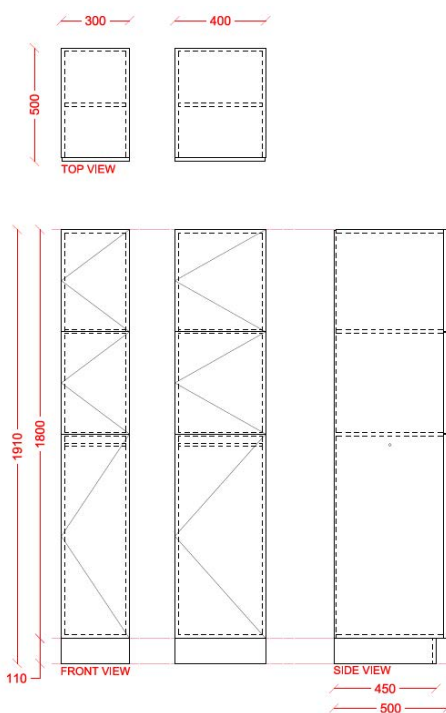


INTERLOC LOCKER TYPE

INTERLOC D UNIT

3 DOOR LOCKER UNIT. COMBINATION 1/2 SIZE AND 1/4 SIZE LOCKERS. HANGING AND BAG / BACKPACK STORAGE.

- ▶ 1800mm high x 500mm deep (standard)
- ▶ 300mm wide or 400mm wide (standard)
- ▶ Larger door hanging distance 828.75mm
- ▶ Door heights 900/450mm
- ▶ Coat hanger provided
- ▶ Custom dimensions available upon request
- ▶ Interloc Plinth 110mm high black (standard)
- ▶ Or Custom height plinth (Interloc recommend no lower than 80mm) custom colours also available
- ▶ Nominate Interloc Locking - request Interloc options.
- ▶ Bulkheads available.
- ▶ End Panels / Filler Panels to suit.
- ▶ Interloc Numbering coloured labels or option for printed labels at extra cost
- ▶ Vents optional (vertical or horizontal)
- ▶ Sloping Tops optional
- ▶ Coloured Internals optional



REVIT Portal
portal.interloc.com.au

Locker Builder
(separate to Revit)