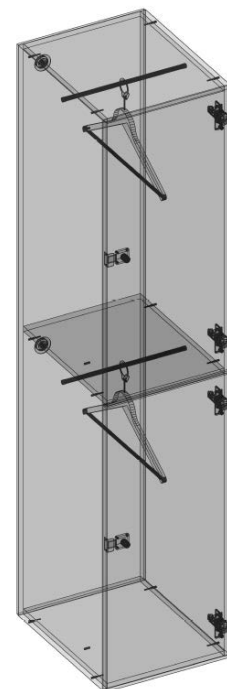
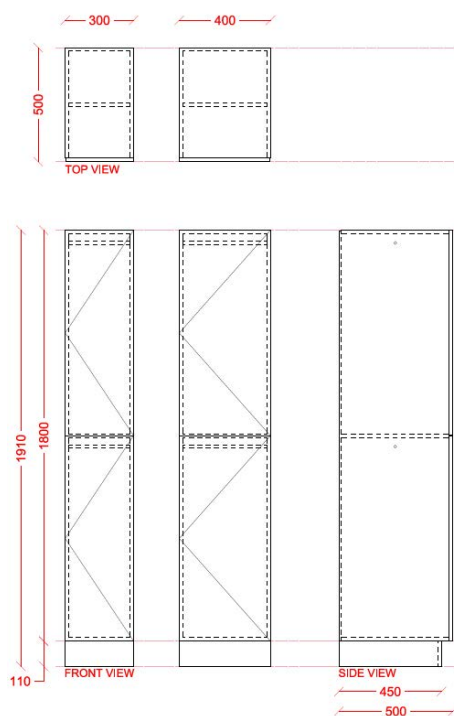




## INTERLOC LOCKER TYPE **INTERLOC C2**

### 2 DOOR LOCKER UNIT. HANGING RAIL. ANY APPLICATION.

- ▶ 1800mm high x 500mm deep (standard)
- ▶ 300mm wide or 400mm wide (standard)
- ▶ Hanging height 865mm
- ▶ Coat hangers included
- ▶ Custom dimensions available upon request
- ▶ Interloc Plinth 110mm high black (standard)
- ▶ Or Custom height plinth (Interloc recommend no lower than 80mm) custom colours also available
- ▶ Nominate Interloc Locking - request Interloc options
- ▶ Bulkheads available
- ▶ End Panels / Filler Panels to suit
- ▶ Interloc Numbering coloured labels or option for printed labels at extra cost
- ▶ Vents optional (vertical or horizontal)
- ▶ Sloping Tops optional
- ▶ Coloured Internals optional



**REVIT Portal**  
portal.interloc.com.au

**Locker Builder**  
(separate to Revit)